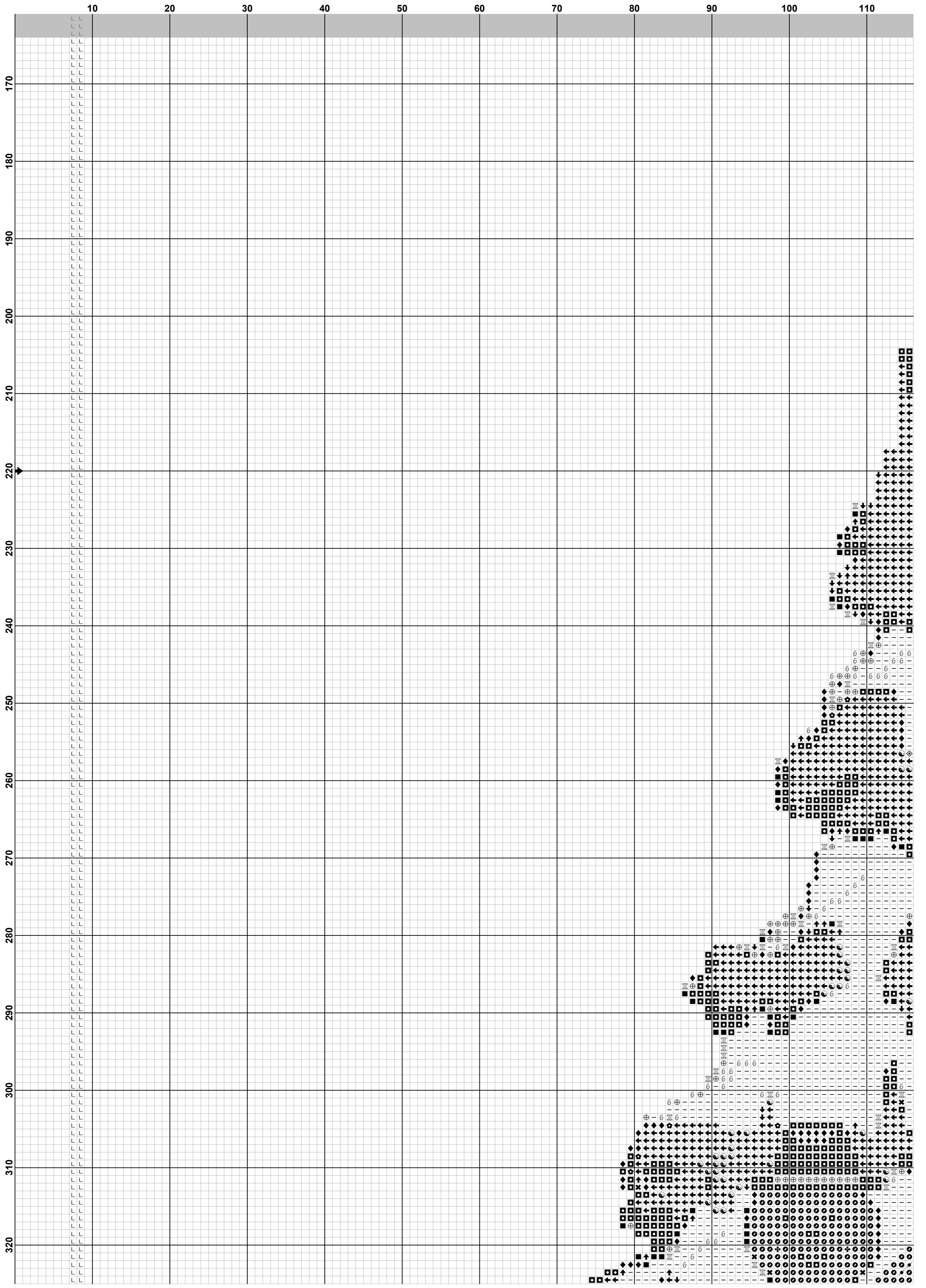
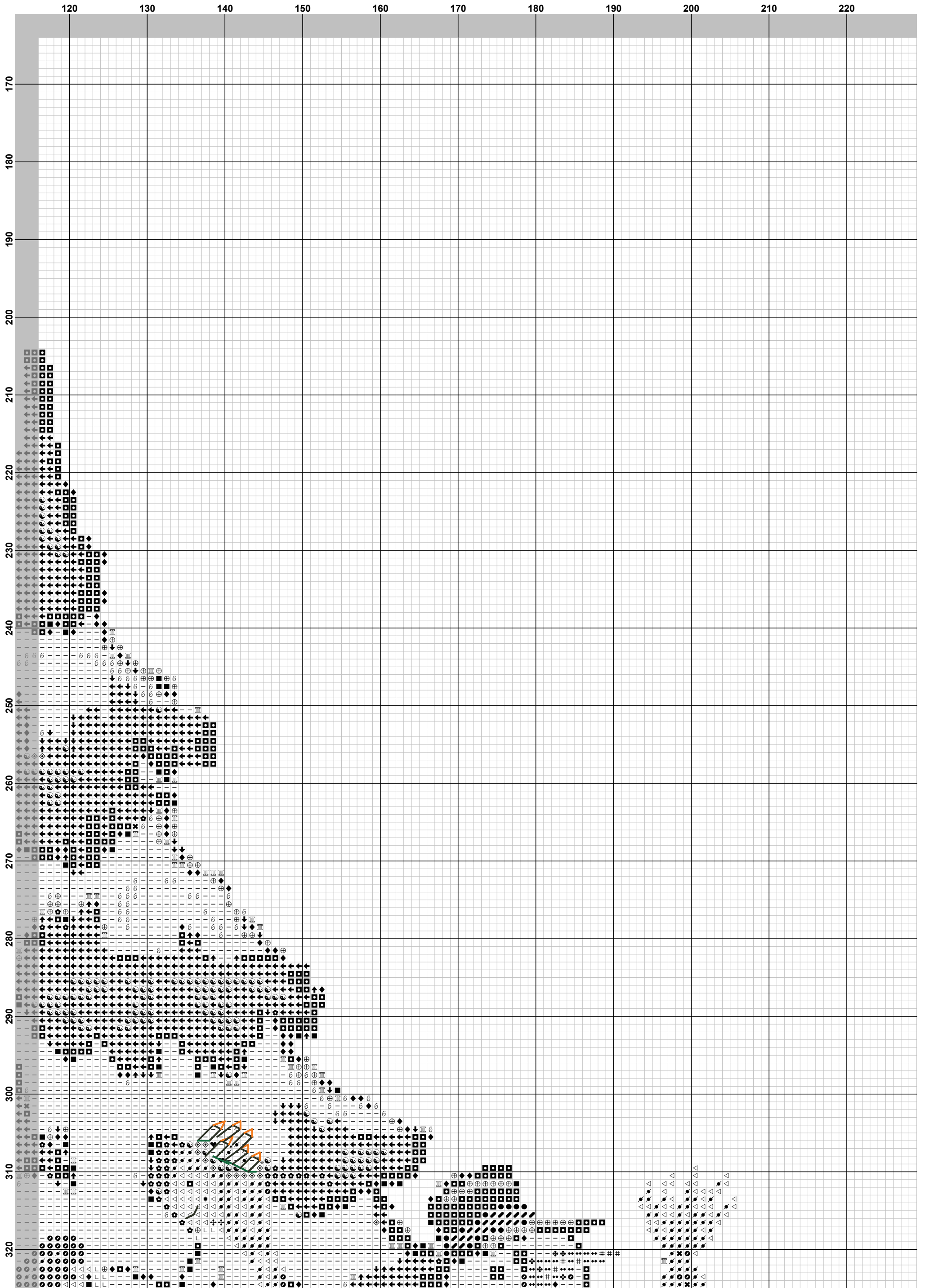
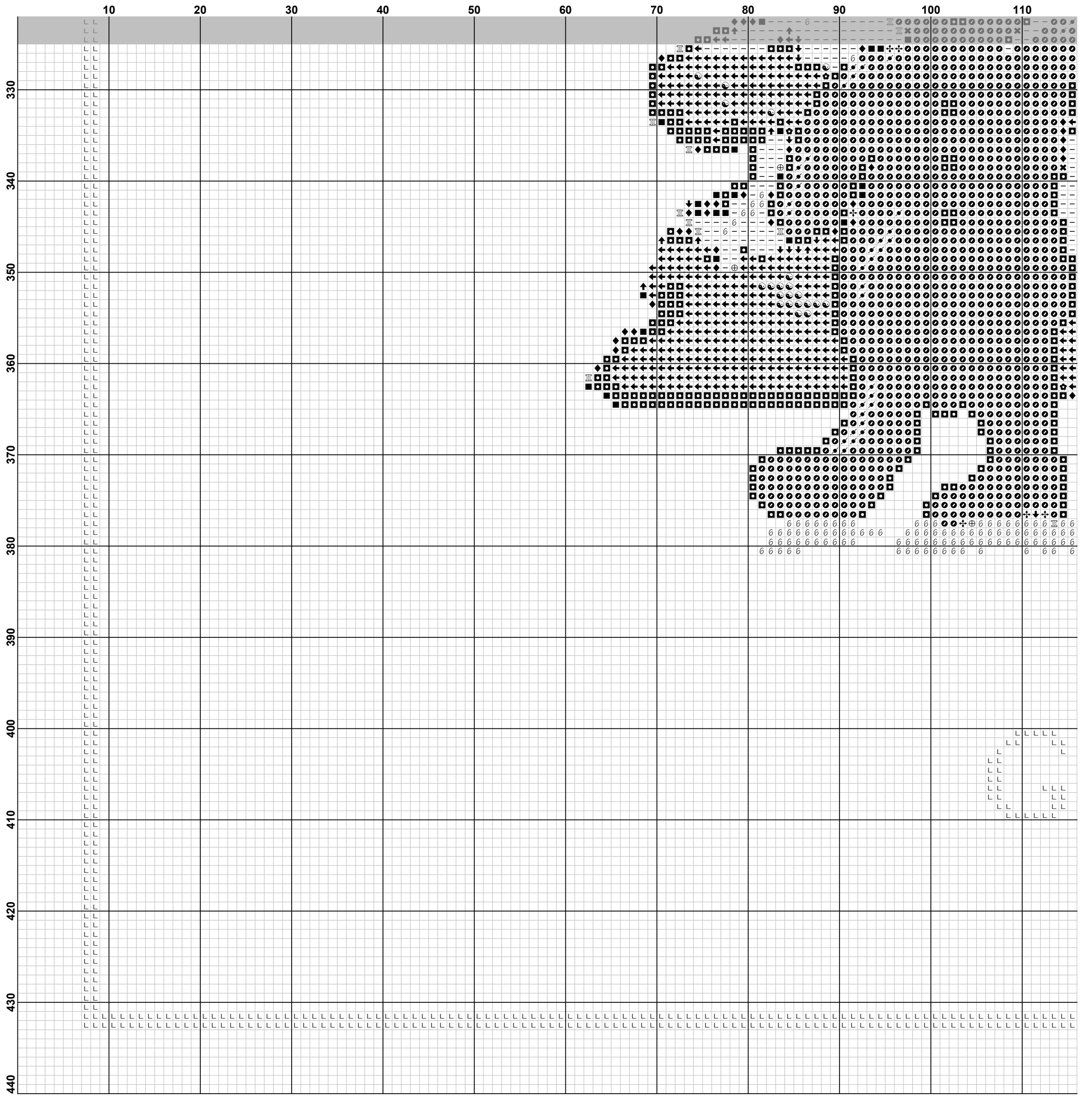


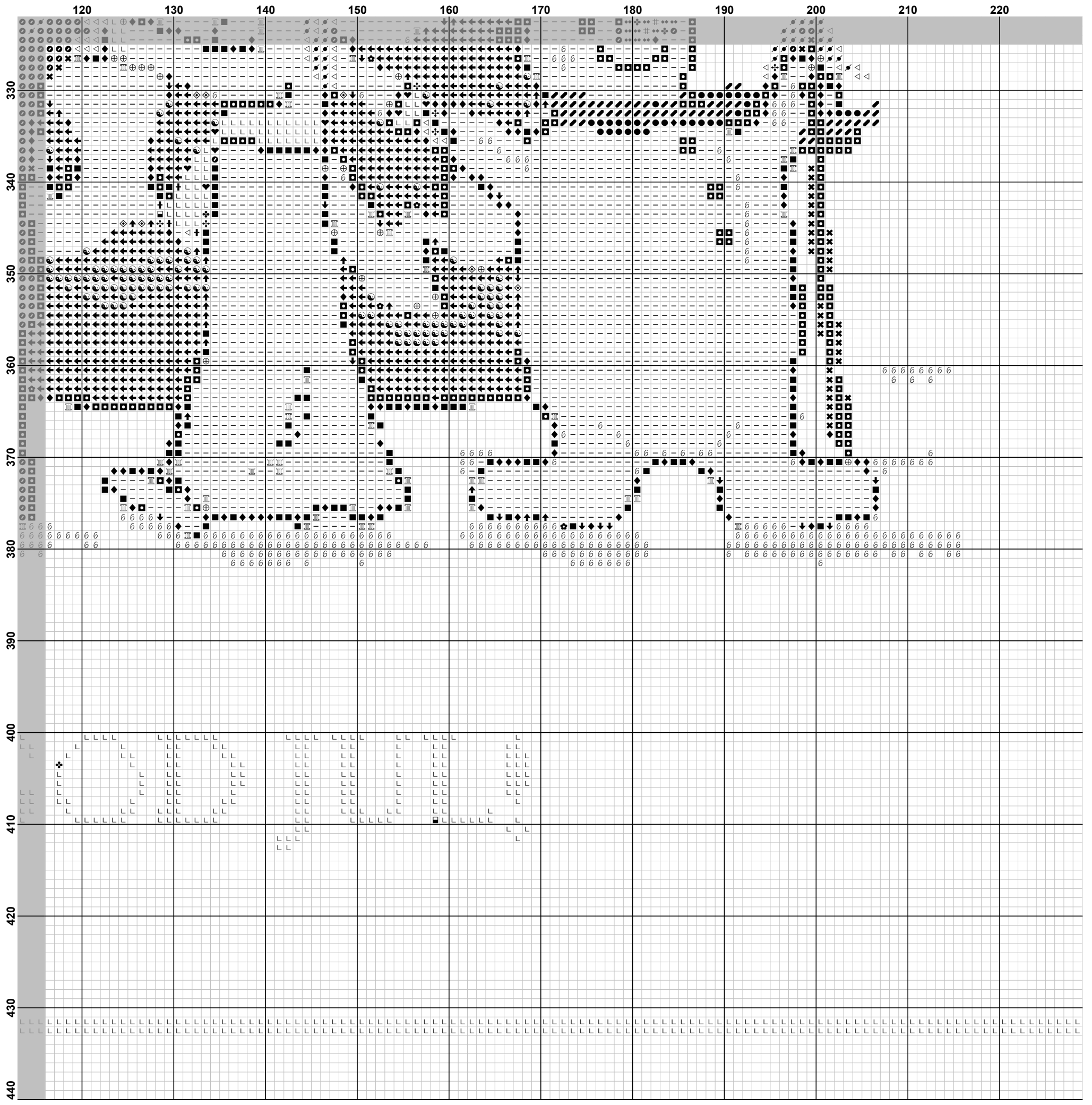
	230	240	250	260	270
10					L L
20					L L
30					L L
40					L L
50					L L
60					L L
70					L L
80					L L
90					L L
100					L L
110					L L
120					L L
130					L L
140					L L
150					L L
160					L L





	230	240	250	260	270
170					
180					
190					
200					
210					
220					
230					
240					
250					
260					
270					
280					
290					
300					
310					
320					







**Pattern Name:** God Jul  
**Designed By:** Broderi Bruden  
**Company:** <http://broderibruden.no-ip.com>  
**Copyright:** Broderi Bruden 2009  
**Fabric:** Aida 14, White  
 261w X 426h Stitches  
**Size:** 14 Count, 47.35w X 77.29h cm

**Floss Used for Full Stitches:**

Symbol	Strands	Type	Number	Color
	2	DMC	159	Gray Blue-LT
	2	DMC	223	Shell Pink-LT
	2	DMC	310	Black
	2	DMC	317	Pewter Gray
	2	DMC	318	Steel Gray-LT
	2	DMC	333	Blue Violet-VY DK
	2	DMC	400	Mahogany-DK
	2	DMC	502	Blue Green
	2	DMC	606	Bright Orange-Red
	2	DMC	608	Bright Orange
	2	DMC	699	Christmas Green
	2	DMC	703	Chartreuse
	2	DMC	747	Sky Blue-VY LT
	2	DMC	817	Coral Red-VY DK
	2	DMC	820	Royal Blue-VY DK
	2	DMC	893	Carnation-LT
	2	DMC	898	Coffee Brown-VY DK
	2	DMC	905	Parrot Green-DK
	2	DMC	926	Gray Green-MD
	2	DMC	945	Tawny
	2	DMC	946	Burnt Orange-MD
	2	DMC	971	Pumpkin
	2	DMC	977	Golden Brown-LT
	2	DMC	3041	Antique Violet-MD
	2	DMC	3706	Melon-MD
	2	DMC	3801	Christmas Red-LT
	2	DMC	3818	Emerald Green-UL VY DK
	2	DMC	White	White

**Floss Used for Quarter Stitches:**

Symbol	Strands	Type	Number	Color
	2	DMC	703	Chartreuse
	2	DMC	971	Pumpkin
	2	DMC	977	Golden Brown-LT

**Floss Used for Back Stitches:**

Symbol	Strands	Type	Number	Color
	1	DMC	310	Black
	1	DMC	699	Christmas Green
	1	DMC	971	Pumpkin
	1	DMC	3818	Emerald Green-UL VY DK

## Usage Summary

Strands Per Skein: 6

Skein Length: 795.0 cm

Type	Number	Full	Half	Quarter	Petite	Back(cm)	Str(cm)	Spec(cm)	French	Bead	Skein Est.
DMC 159	159	154	0	0	0	0.0	0.0	0.0	0	0	1.000
DMC 223	223	14	0	0	0	0.0	0.0	0.0	0	0	1.000
DMC 310	310	1172	0	0	0	2.7	0.0	0.0	0	0	1.000
DMC 317	317	380	0	0	0	0.0	0.0	0.0	0	0	1.000
DMC 318	318	157	0	0	0	0.0	0.0	0.0	0	0	1.000
DMC 333	333	81	0	0	0	0.0	0.0	0.0	0	0	1.000
DMC 400	400	1419	0	0	0	0.0	0.0	0.0	0	0	1.000
DMC 502	502	67	0	0	0	0.0	0.0	0.0	0	0	1.000
DMC 606	606	2516	0	0	0	0.0	0.0	0.0	0	0	2.000
DMC 608	608	21	0	0	0	0.0	0.0	0.0	0	0	1.000
DMC 699	699	2500	0	0	0	0.5	0.0	0.0	0	0	2.000
DMC 703	703	21	0	1	0	0.0	0.0	0.0	0	0	1.000
DMC 747	747	558	0	0	0	0.0	0.0	0.0	0	0	1.000
DMC 817	817	10	0	0	0	0.0	0.0	0.0	0	0	1.000
DMC 820	820	47	0	0	0	0.0	0.0	0.0	0	0	1.000
DMC 893	893	4	0	0	0	0.0	0.0	0.0	0	0	1.000
DMC 898	898	45	0	0	0	0.0	0.0	0.0	0	0	1.000
DMC 905	905	308	0	0	0	0.0	0.0	0.0	0	0	1.000
DMC 926	926	93	0	0	0	0.0	0.0	0.0	0	0	1.000
DMC 945	945	135	0	0	0	0.0	0.0	0.0	0	0	1.000
DMC 946	946	9	0	0	0	0.0	0.0	0.0	0	0	1.000
DMC 971	971	7	0	1	0	1.0	0.0	0.0	0	0	1.000
DMC 977	977	178	0	1	0	0.0	0.0	0.0	0	0	1.000
DMC 3041	3041	261	0	0	0	0.0	0.0	0.0	0	0	1.000
DMC 3706	3706	1	0	0	0	0.0	0.0	0.0	0	0	1.000
DMC 3801	3801	2	0	0	0	0.0	0.0	0.0	0	0	1.000
DMC 3818	3818	52	0	0	0	0.1	0.0	0.0	0	0	1.000
DMC White	White	4335	0	0	0	0.0	0.0	0.0	0	0	2.000